

Women's Legal Service WA

# Stepping-stones

Celebrating 25 years



**Women's**  
Legal Service WA  
Justice for women



# The beginning

1996/97 was the Women's Legal Services' Inc first full year of operation, when the service was funded. This was thanks to a small group of committed women who worked to get the service started over several years, usually meeting on a Sunday morning at someone's kitchen table. Chief Justice David Malcolm attended the opening of the service, in Barrack St where the service was first located.

Convenor Ruth Webber wrote that WLS had been fortunate in attracting so many volunteers to the Service during the year. Volunteers were involved in all aspects of the service, administrative work, giving legal advice, telephone information, holding information sessions, undertaking research, developing and implementing projects, working groups and sub-committees.

Women's Law Centre WA became incorporated 2002 and was co-located with the Mental Health Law Centre on Beaufort St in Inglewood.



# Ngaanyatjarra Pitjantjatjara Yankunytjatjara lands

Women's Law Centre provided a special bi-monthly outreach circuit to various locations throughout the Ngaanyatjarra Pitjantjatjara Yankunytjatjara lands from 2017. The solicitor, Tracey, delivered legal services to women in the remote Aboriginal communities of the Ngaanyatjarra, Pitjantjatjara and Yankunytjatjara Lands in the Gibson Desert region, as well as Warburton, Wanarn, Warakurna, Wingellina, Blackstone and Jameson communities. Services were also delivered from the NPY Lands office in Alice Springs.

Funded by the NPY Women's Council, WLC provided assistance with restraining orders, criminal injuries compensation and protection and care matters. Services were always delivered in collaboration with a caseworker from the Council. The lawyer and caseworker worked with local police, child protection workers, and other service providers, and liaised with travelling court staff. Community legal education was provided for NPY Women's Council staff during outreach. Tracey still receives referrals from the NPY Women's Council, mostly for criminal injuries compensation matters.



# Health Justice Partnerships Working in hospitals



The co-location of lawyers, with valued women's health services, removes barriers for women accessing 'face-to-face' confidential legal assistance. Co-locating in a secure and trusted space on a regular basis enables the provision of coordinated case management and seamless client pathways. This is the optimal environment to deliver wrap-around supports, health, legal assistance and social supports within a place-based context.

WLSWA works closely with social work staff at King Edward Memorial and Fiona Stanley Hospitals to advocate for pregnant women with Department of Communities involvement. We have partnerships with Women's Health and Family Services and Fremantle Women's Health Centre, amongst others in the metro area, providing legal support on a range of issues. We also work with women's health services in the Goldfields and Kimberley regions.

These collaborations allow us to address unmet legal need through the provision of legal assistance to women who need it but are otherwise unlikely to access legal help, and improve health and wellbeing outcomes by addressing health-harming legal problems.

Our partnerships strengthen ties between providers of women's legal assistance and women's health services for the benefit of women and their children/families and are also cost effective service delivery, for efficiency and impact.

**“ I strongly believe that Women's Legal Service's efforts in an exceptionally challenging area of practice are having a direct and long-lasting positive impact on the lives of our most vulnerable women and infants in the Western Australia community. ”**



# Perth Children's Court and Danjoo Bidi Ak



Women's Legal Service commenced a duty lawyer service at Perth Children's Court, four days a week in 2020. Assistance includes legal advice, information, referrals (legal and non-legal) and discrete representation services to unrepresented women with a matter before the Court on that day.

There is a documented shortfall in legal support for mothers in protection and care matters and this service exists to ensure that all women who have matters before the court have access to legal advice and representation. This includes Aboriginal and Torres Strait Islander and culturally and linguistically diverse women. Although WLSWA were aware of this unmet need, we have nevertheless been surprised by the extent of the number of women accessing this service.

Support is provided in these matters before, during and after Children's Court proceedings. Many women are subsequently provided with ongoing assistance from WLSWA. Feedback from other services has been extremely positive, with a high level of confidence and respect for the work of our staff.

WLSWA lawyers also provide ongoing representation for women who have proceedings before Perth Children's Court's Therapeutic Pilot. Hearings in Danjoo Bidi-ak, overseen by Magistrate Hughes, run for one hour and typically occur every week. The Pilot aims to facilitate collaborative 'problem solving' approach to Protection and Care matters rather than the traditional adversarial model of court proceedings. This model has attracted a lot of attention with good outcomes being realised.



# CHIPS (Creating Hope in Prisons Service)

CHIPS was a prison outreach program providing critical legal support to incarcerated women at Bandyup Women's Prison and Boronia Pre-Release Centre that was delivered by WLSWA for almost 10 years until 2015. It was funded by a variety of sources including philanthropists and the Public Purposes Trust.

The program offered targeted assistance and legal representation in family law, plus protection and care matters. Some of the women supported through CHIP lived with exceptional adversities and barriers, including being illiterate and having a herstory of significant trauma. The program was a holistic service, linking clients to other legal and non-legal services as appropriate and included community legal education.

More than 1,360 advices were given to women and an additional 231 cases were opened in the period from 2011-2015. Of particular relevance was the number of cases that eventuated in court: 36 women required representation, whilst 75 involved primary dispute resolution. These figures demonstrated that early, quality legal advice was able to resolve matters without further stretching resources in costly court proceedings.

The WLSWA team continue to regularly participate in community events at women's prisons, including 'Change Starts with You' transitional services expo at Bandyup Prison and the Gala Day at the Boronia Pre-release Centre for Women, as well as events in the regions, Eastern Goldfields and Roebourne.



# Djinda

Djinda was a specialist service for Aboriginal and Torres Strait Islander women in the Perth metropolitan area who experienced family and domestic violence. WLSWA delivered this service in partnership with Relationships Australia WA from 2013 to 2022. The service was staffed by dedicated lawyers and resource workers, who used a trauma-informed and culturally sensitive approach to their work. The Djinda team delivered legal advice and support, advocacy, referral, risk assessment and safety planning, court support, assistance linking to other services, practical support, and counselling/yarning. The Djinda lawyers frequently had matters heard in Danjoo Bidi Ak.

Hundreds of Aboriginal women received crucial support and advocacy through complex and often traumatic legal processes in the eight years that WLSWA delivered Djinda with Relationships Australia. We are proud of our Djinda record and indebted to those women, who have trusted us with their stories, their trauma and their strength. An independent social impact evaluation of Djinda's legal services in 2016 showed that 100% of clients in the preceding 12 months were satisfied with the service and that the Djinda lawyers made the judicial process easier for clients.

Djinda concluded in June 2022, with the contract awarded to Aboriginal Family Legal Services and Southern Aboriginal Corporation. WLSWA worked closely with AFLS to ensure contingency plans for transitioning clients were person centred and culturally secure. WLSWA fully supports this vital service now being delivered by AFLS and SAC, as it is imperative that there be Aboriginal-led services supporting Aboriginal people.



# Safe as Houses

WLSWA delivered the Safe as Houses Program in collaboration with Tenancy WA and Street Law Centre WA from 2018-2020. The program provided legal and non-legal assistance to women who were homeless or at risk of homelessness as a result of family violence.

SASH was a collaboration between three community legal centres: Tenancy WA, Street Law Centre WA and WLSWA. The program provided holistic legal and related non-legal support for women and children who have experienced domestic violence and who are, or are at risk of, homelessness. SASH included a health justice partnership with King Edward Memorial Hospital, and delivered a legal advice clinic at the hospital.

WLSWA supported SASH clients by providing advice and representation to women in the areas of family law and child protection, with a particular emphasis on property and maintenance issues for women made homeless by family and domestic violence. Solicitors from Tenancy WA and Street Law provided legal support in their areas of practice. A caseworker based at Tenancy WA coordinated referrals across the three CLCs and relevant community services and government departments. Case plans for each client were developed at fortnightly team meetings.

The University of Western Australia undertook a concurrent research project evaluating the positive impact of the integrated SASH case management model.



# Pilbara presence and BHP

WLSWA entered exciting new territory through a corporate partnership with BHP in 2020. This partnership enables WLSWA to offer services in the Pilbara and across regional WA, where women have extremely limited access to generalist legal and support services. As part of this pilot program, WLSWA offers a state-wide telephone service, virtual office, the services of a duty lawyer supporting better outcomes in these vulnerable communities, and community legal education. Providing education to service providers in the region who work with our client base, ensures that all who work with women are equipped to support them through their legal journey. We have delivered CLE to other agencies in Karratha, Newman and Port Hedland.

Through a combination of travel to the region and establishing strong relationships with agencies and services on the ground, WLSWA continues to consolidate our BHP funded work in the Pilbara. This included during periods where outreach to the region was significantly curtailed due to COVID-induced travel restrictions.

WLSWA lawyer, Anna, is a member of the Pilbara Family and Domestic Violence Network and regularly participates local interagency events, such as ‘Stopping Family Violence – Unpacking FDV’ education and information community event at South Hedland Gateway Village and WACOSS FDV Conference in Karratha.



# Financial Counselling

WLSWA has employed a financial counsellor since 2020. WLSWA clients with a low or limited income, combined with trauma, language or cultural barriers and housing instability are especially vulnerable to financial issues. The impact of debt, arrears, fines, and diminished material support is huge for these women, and often their children. Women cannot rebuild their lives and protect their children without access to safe and secure housing and financial support.

During COVID, there was a rise in the incidence of women presenting with multiple debts due to financial abuse, where the women often had no or limited control over the household finances.

The addition of a financial counsellor to the team adds significant value for our suite of services, providing women with pathways out of these adverse circumstances.

In the last year, the WLSWA financial counsellor assisted in facilitating getting almost \$100,000 in client debts waived.

This service is now being independently evaluated from a social impact perspective.



# Pro bono support and the Property Clinic

Capacity at WLSWA has always been boosted via the pro bono support from private firms.

Begun in 2016, WLSWA staff coordinate the fortnightly or monthly evening Property Law Clinic to address the unmet need of post-separation property matters.

This clinic was established in response to the vast service gap experienced by women seeking low cost or free assistance in property settlement matters, especially in circumstances where family and domestic violence is present. We are very grateful to our team of volunteer solicitors who staff this clinic and who assist women in this much needed area.

Pro bono support is frequently secured at WLSWA in other areas too. This includes to assist with drafting Response Affidavits and Memorandum preparation for protection and care matters, Criminal Injuries Compensation and to finalise other court documents as required.

Through pro bono relationships WLSWA has also reviewed and designed governance processes, policies and procedures, undertaken research projects, and helped prepare policy submissions.

WA Bar representation is sought when WLSWA is unable to guarantee trial representation for lengthy or particularly complex matters and we appreciate the good will of the Bar to assist in these circumstances. Pro bono partners are mentored about trauma-informed approaches to ensure the client's wellbeing is safeguarded during these times.

WLSWA contributes to the development of undergraduate and emerging lawyers through placements within our office. This includes regularly providing Practice Legal Training placements for Piddingtons' students and work experience for other undergraduates.



# Inreach and outreach

WLSWA provides legal assistance and support to women state-wide. In addition to delivering legal assistance in person in WLSWA, the legal team is integrated with other social supports and community services to enable us to deliver place-based responses around Western Australia. WLSWA has established actual outreach and virtual offices across the Perth metro and in WA regions, by co-locating the lawyers within other services or offering video conferencing services.

Enabling women to access ‘face-to-face’ confidential legal advice from the secure space of an agency known to them (for example, women’s refuges, health and counselling services) facilitates client’s access to integrated place-based responses across WA. Joined up services are always provided with the informed consent of the client.

Our regular outreach cycles to respective regions also allows us to sustain strong partnerships with relevant local providers and stakeholders, provide in-person appointments, deliver community legal education, and join local forums and women’s camps.

In 1998, WLSWA developed Guiding Principles which emphasise the principles of respect, self-determination and cultural security, to ensure appropriate service delivery to Indigenous women.



# 'Vulnerable Women's' funding

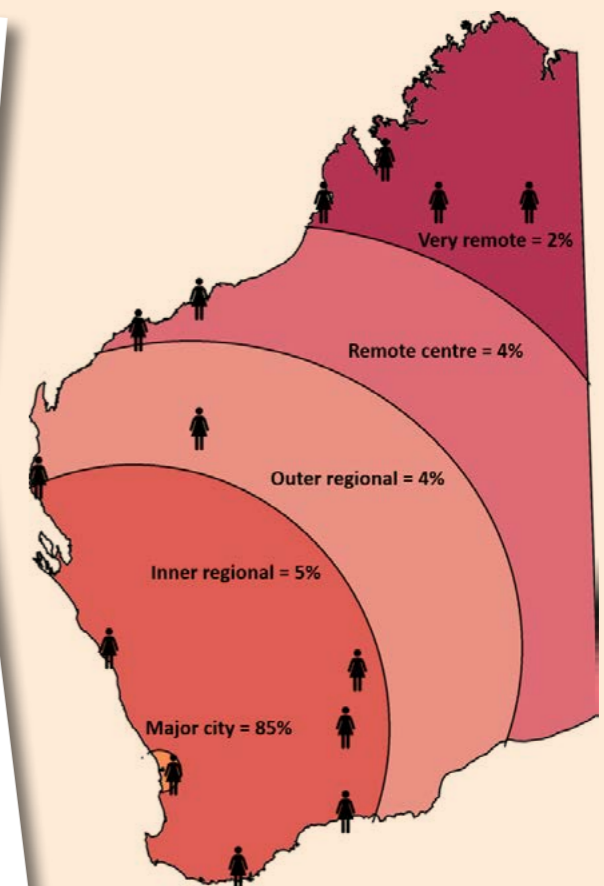
In 2020 the federal government made a historic commitment \$129 million over four years for women's legal centres to help vulnerable women access justice. Following advice from the Commonwealth, Department of Justice nominated WLSWA as a preferred provider for some of the incoming additional 2021-2022 funding, and which included the COVID component.

We recruited new lawyers to provide supports that were region specific, replicating the approach to service delivery that WLSWA had already designed and implemented for the Pilbara. Responsible for their respective areas of Western Australia, these dedicated legal supports were available for referrals from respective regional frontline services.

WLSWA does not duplicate any programs that are already being provided locally by other service providers. We add value in responding to unmet need that demonstrably arises through:

- Women who are conflicted out of other legal services
- Women who prefer to access a non-local service
- And where local services are already operating at capacity

Whilst the location of the legal assistance provided through these respective programs is different, the type of activities delivered are the same; legal information/advice, tasks, ongoing casework and representation, duty service, outreach and co-location and community legal education. It also includes pre and post court advocacy.



# Law reform

The gender inequality that drives violence against women, and the barriers to justice that women disproportionately experience, requires whole-of-systems reforms. Through our legal services, community education, networks, and partnerships, WLSWA raises awareness of issues impacting women in judicial and other systems and contributes ideas to address these legal and social issues.

In 1998 we provided material and information in relation to proposed amendments to the Equal Opportunity Act with respect to breast-feeding in public.

In 2008 we partnered with the Domestic Violence Legal Workers Network and Indigenous clients from the Anawim refuge to produce a submission to the Equal Opportunities Commission's Inquiry into discrimination in the private rental market. This inquiry formed the basis of the Accommodating Everyone Report.

In 2013 Women's Law Centre published an article regarding the negative impact of amendments to the Restraining Orders Act.

In 2018, and in collaboration with the national Women's Legal Service Australia Network, we provided submissions to the Australian Law Reform Commission in relation to changes to family law, cross examination by perpetrators of family and domestic violence and proposed changes to structure of the Family Court representing women in WA.

In 2019 WLSWA contributed to the WA Parliamentary Enquiry into elder abuse and was quoted frequently in the Committee's final report. We also gave advice and prepared a submission in relation to the WA Government's 10-year plan to reduce family and domestic violence. In 2021 we were invited to participate in the National Summit on Women's Safety.

We are continuing to contribute to legislative responses to coercive control in Western Australia Discussion and the review of sexual offences and the law relating to consent.



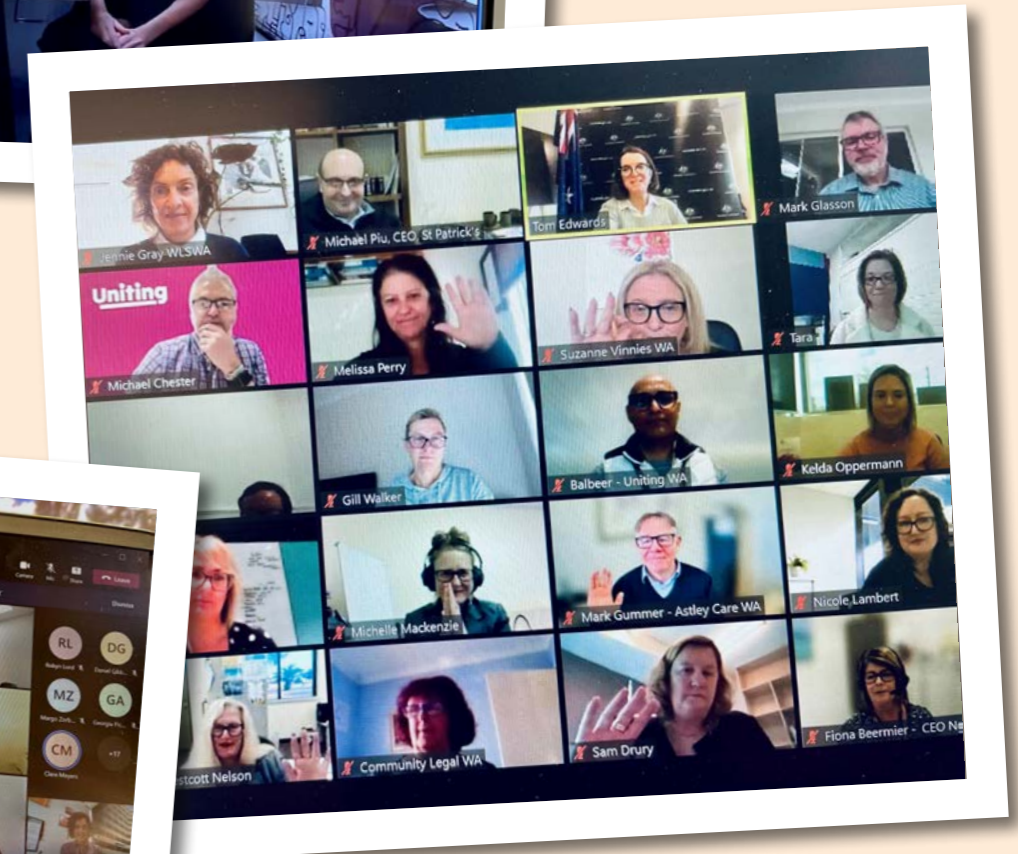
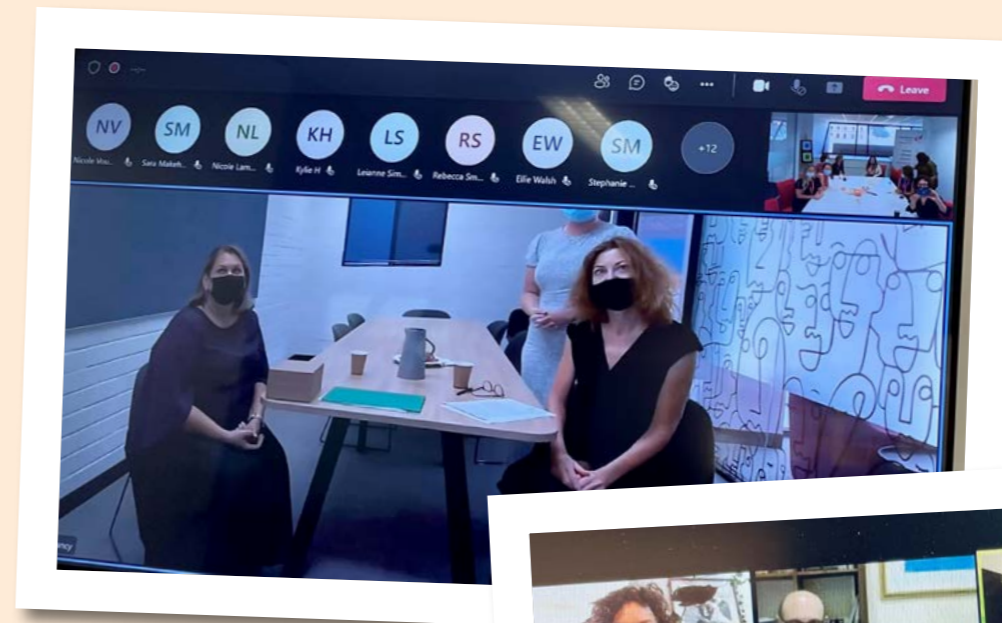
# Responding to COVID

Like many other services in the community sector, the pandemic coincided with a period of significant growth. Due to COVID-19, demand for our services rapidly escalated, and we applauded our staff for their incredible commitment and contribution in these very challenging circumstances.

During this time, the management team worked hard to remain abreast of changing government advice, evolving our policies to reflect the latest in the government's health directives, and to maximise safety and wellbeing of staff and clients.

Some of the scheduled outreach and work with organisations and communities in the various WA regions was delayed, to reduce the impacts of COVID-19. We variously moved appointments to online or phone, and supported staff to work from home, following the government guidelines. Even when travel restrictions were not mandated, we always took advice about whether to visit services in-person from our partners in the region in the first instance.

The long tail of COVID continues to disproportionately impact women, more likely to be living in poverty, more likely to be the primary care giver, and with the elevated rates of family violence persisting.



# Community Legal Education

Community legal education is an important early intervention strategy to educate and empower women about their legal rights and obligations, and to build the capacity and capabilities of frontline service providers. WLSWA's CLE is prioritised to other community legal centres and service provider partners, especially in the regions.

WLSWA delivers CLE to other community legal centres via co-running matters, mock trials, and supervision of litigation files, as well as legal training, on an as needs basis.

CLE is delivered through a combination of virtual and in-person sessions, including when lawyers visit the regions. CLE is tailored to meet the needs of community organisation's staff and their client base.

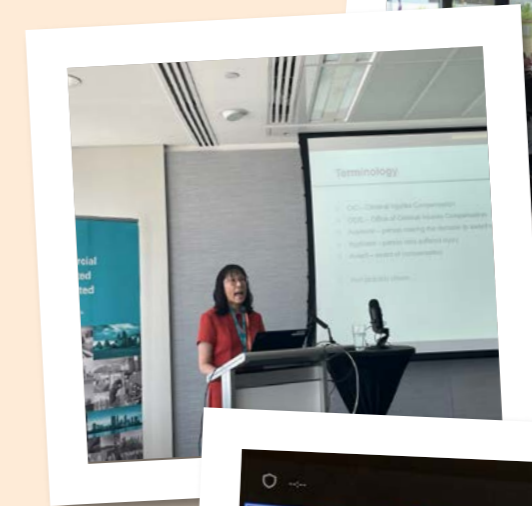
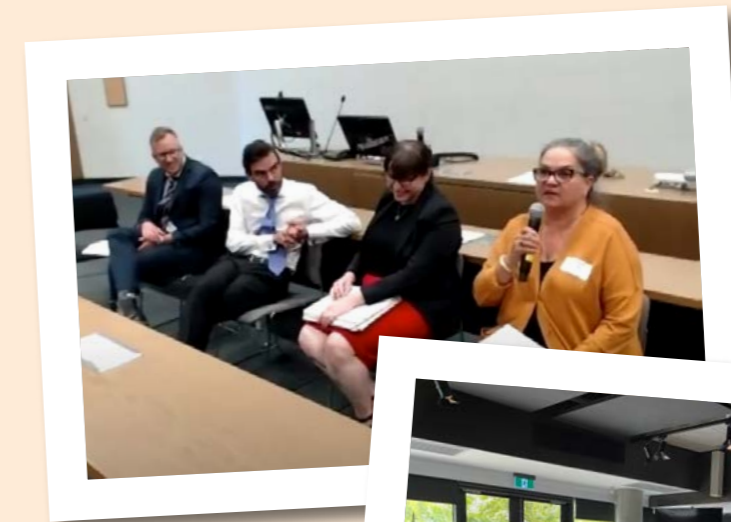
WLSWA has many examples of CLE programs, from one-off sessions to ongoing education.

In 2011 we had a dedicated focus on Community Legal Education with

the newly created role of Volunteer Community Legal Education Coordinator who organised the launch of our website and CLE resources.

Education about protection and care proceedings and family law children's issues was delivered to incarcerated women in 2012, through the Ngala Parenting Program.

In 2021-2022 WLSWA delivered Legal Health Check workshops to frontline teams in gender-specific agencies – women's health services, women's DV counselling services and women's hospitals, and women's prisons – to assist them to identify legal issues early and make appropriate referrals. We also facilitated workshops for universal services including Hardship Utility Grants Service Centre, Alinta and Water Corporation. In the regions, WLSWA delivered workshops in community centres in Broome, Derby, Fitzroy Crossing, Esperance Kalgoorlie, Karratha, Newman and Hedland.



# Partnerships

WLSWA has a range of partnerships with other community service organisations. These collaborations are established and expanded for a variety of reasons. This includes to ensure integrated and holistic supports to clients, for joined up advocacy, to avoid duplication in service delivery, to achieve economies of scale, and to remain abreast of trends in practice.

Practice partners include specialist services such as women's refuges and women's health centres, as well as larger agencies and services. Partnerships have been formed across all of WA, such as with Women's Health and Family Services in Northbridge and King Edward Hospital in the metro, to Nyunnga-Ku Women's Hub in the Goldfields, Marninwarntikura Women's Resource Centre in the Kimberley, and Newman Women's Refuge in the Pilbara.

From 2008 we facilitated the WA Domestic Violence Legal Workers Network alliance. In 2010 we embarked on the ambitious project of coordinating the Network of Community Legal Centres Partnering with Family Relationship Centres across WA, promoting long-term systemic improvements for separating families, particularly promoting safety for women and children.

In 2022, WLSWA team members are chairing nation-wide committees; Communities of Practice for community work in legal services and Child Protection Policy Advisory Working Group respectively.



# Women's Legal Service Australia and other Networks



WLSWA is networked to women's legal services in other jurisdictions and meets regularly with inter-state colleagues to ensure each is abreast and updated with current legislative reforms and practice trends. This is also an opportunity to share knowledge and resources and realise economies of scale in strategic and policy initiatives.

One of WLSWA's priorities is to work with others to advocate and influence positive change, and we are involved with the following groups convened for these reasons,

- Alliance of Lawyers Practicing in Protection and Care
- Law Access Stakeholder Advisory Committee
- Family Violence Legal Network
- Pilbara FDV Network
- Protection & Care Advocacy Network
- Specialist Sexual Violence Advisory Group
- WA Family Law Planning Network

WLSWA links with legal and social service communities of practice within WA as a mechanism to share knowledge and supports.

- Community Legal WA Managers
- Network of Duty Lawyers (Children's Court WA)
- Pilot Court Operational Group (Perth Children's Court)
- Shuttle Conference Working Group (Magistrate's Court)

WLSWA is a member of various relevant peak bodies.

- Centre for Women's Safety and Wellbeing
- Community Employers WA
- Community Legal WA
- WA Council of Social Service



# Community and sector events

Women's Legal Service staff and members are active participants in community and sector events that promote positive change that affects the rights of women.

WLSWA prioritises attendance and assistance at some annual events in particular.

- International Women's Day
- Candlelight Vigil
- Law Society's Law Week
- NAIDOC week
- 16 days of Activism against Gender-Based Violence
- Silent Domestic Violence Memorial March and Rally

Our team have importantly been involved in organising and delivering the Protection and Care Legal Symposium series, in collaboration with others from the sector, since it began in 2018.

We are always proud to join with other victim/survivors, friends and colleagues and reiterate our commitment to raise awareness and work together to improve women's access to justice.



# New office and new look

Women's Law Centre of WA Inc. became Women's Legal Service WA Inc. in 2018. The brand identity for WLSWA is a combination of strong symbols and simple, modern typography. The elements in our branding signify the combined concepts of justice, advocacy, strength, and renewal.

A phoenix rises triumphantly with renewed vitality, representing the desire to support the women who seek the help and expertise of the WLSWA in their journey towards a resolved outcome. The rich, fiery colours with the oranges, reds, deep pinks and purples were chosen for their warmth and vibrancy.

The new brand coincided with the move from the ground floor of 445 Hay St, Perth, to our current location on level 1.



# Awards and recognition

Women's Legal Service WA is recognised by the community for improving client's longer-term physical, emotional and financial security. This was acknowledged by WA Minister Amber-Jade Sanderson who presented the service with the 2021 Consumer Protection Award in the organisational category.

WSLWA was shortlisted for the 2021 Attorney General's Community Service Law Awards. Our Djinda Service was also shortlisted for the 2021 Attorney General's Community Service Law Awards in the 'Not for Profit' category and runner up at the 2021 NAIDOC Perth Awards for Program of the Year.

The WLSWA CEO was recently presented with a Fireside Message Stick (Call to Action) at the Boorna Wangkiny Allawah! Burdiyas ceremony, witnessed by members of the Aboriginal community, service leaders and staff, and the Elders. This was an open to the invitation to work together with the Elders to build strong and meaningful relationships with the Aboriginal community here in Perth and across the state.



# Celebrating our staff, Board, members and volunteers



Our incredible staff, volunteers, members, and Board have all played a role in realising our vision of Justice for Women. Clare Thompson K.C. was the inaugural WLSWA Patron. Antoinette Kennedy AO was made Patron in 2010. Antoinette is one of the most exceptional women to have been a member of Western Australia's legal profession and is acknowledged for her mentoring work within the community. When she became a lawyer, there were only five other women practising in WA. She was the first woman appointed as a judge in 1985 and the first woman appointed as Chief Judge of the District Court of WA in 2004.

Life Membership is the highest award offered by WLSWA, recognising the remarkable contribution of individuals to the purpose and values of the organisation. In addition to Antoinette, other life members include Nicoletta Ciffolilli, Mairead McCoy, Linda Savage, and Marnie Williams.

We are incredibly fortunate to have a dedicated and passionate staff team who are unequivocally up for the challenges of striving to meet women's unmet needs and we thank and celebrate them for their unwavering commitments. There are many ex WLSWA employees, peers amongst us in the legal sector and beyond. We are pleased that our paths continue to cross and that our corporate history continues as a living narrative, thanks to this.

The outstanding volunteers we attract to work with us have been important contributors to our achievements too, helping sustain us an organisation. This includes legal, community service and social work students and we are also extremely grateful for their efforts.



# Poster project

WLSWA facilitated the design, production and distribution of posters aimed at debunking myths commonly used by perpetrators to prevent women from leaving an abusive relationship. A victim's fear of the adverse outcomes is exacerbated for those women who are socially, culturally, and economically isolated. The posters target women who live in rural and regional areas, women from CaLD backgrounds, women who speak English as a second or third language, and women living in Australia on a temporary visa. Here, perpetrators can use their migration status as an additional tool for control and many of these women, without established networks and supports, are further dependent on the perpetrator for social and community connections.

The myths on the poster were identified through community consultation with peaks bodies, partner providers and women with lived experience. They are translated into Arabic, Farsi, Punjabi, and Vietnamese.

The posters are being displayed in women's only spaces, from gender specific agencies to women's amenities in hospitals, universities, libraries and so on. Editable versions have also been provided to be adapted for use in other states. This resource was funded by the WA Department of Communities and we are looking at creating a series of posters now, around other areas where women are impacted by falsehoods.



**Women's  
Legal Service WA**  
Justice for women



**Myths about seeking help to stop domestic violence**  
**أكاذيب حول البحث عن المساعدة لوقف العنف المنزلي**  
**ਘਰੇਲੂ ਹਿੰਸਾ ਨੂੰ ਰੋਕਣ ਲਈ ਮੱਦਦ ਮੰਗਣ ਬਾਰੇ ਝੂਠ**  
**Nói dối về việc tìm kiếm sự giúp đỡ để ngăn chặn bạo lực gia đình**  
**دروغ هایی در مورد درخواست کمک برای توقف خشونت خانگی**

**People who use violence against women often say things that are untrue:**  
 الأشخاص الذين يستخدمون العنف ضد المرأة عادةً يقولون أشياء غير صحيحة:  
 ਜੇ ਸੋਕ ਔਰਤਾਂ ਵਿਰੁੱਧ ਹਿੰਸਾ ਦੀ ਵਰਤੋਂ ਕਰਦੇ ਹਨ ਉਹ ਅਕਸਰ ਅਸਿੱਧੇ ਗੱਲਾਂ ਕਹਿੰਦੇ ਹਨ ਜੋ ਝੂਠ ਹੁੰਦੀਆਂ ਹਨ:  
 Những người hành hung phụ nữ thường nói những điều không đúng:  
 افرادی که علیه زنان از خشونت استفاده میکنند اغلب چیزهایی میگویند که خلاف واقعیت است:

**Untrue: "I will take the children and you will never see them again"**  
 غير صحيح: "سأخذ الأبناء ولن تراهم مرة أخرى"  
 ਝੂਠ: "ਮੈਂ ਬੱਚਿਆਂ ਨੂੰ ਲੈ ਜਾਵਾਂਗਾ ਅਤੇ ਤੁਸੀਂ ਉਨ੍ਹਾਂ ਨੂੰ ਦੁਬਾਰਾ ਵੇਖੋ ਨਹੀਂ ਦੇਖ ਸਕੋਗੇ"  
 Sai sự thật: "Tôi sẽ đưa bạn trẻ đi và cô sẽ không bao giờ gặp lại chúng nữa"  
 خلاف واقعیت: "من بچه‌ها را می‌گیرم و دیگر هرگز آنها را نخواهم دید."

**Untrue: "There is nowhere for you to go"**  
 غير صحيح: "ليس لديك مكان تذهب إليه"  
 ਝੂਠ: "ਤੁਹਾਡੇ ਜਾਣ ਲਈ ਕਿਤੇ ਵੀ ਕੋਈ ਥਾਂ ਨਹੀਂ ਹੈ"  
 Sai sự thật: "Có không còn nơi nào để đi"  
 خلاف واقعیت: "ههچ جایی وجود ندارد که بتوانی به آنجا بروی."

**Untrue: "You will bring shame to our family if you speak about this problem"**  
 غير صحيح: "ستحطين العار لعائلتنا إذا تحدثتي بشأن هذه المشكلة"  
 ਝੂਠ: "ਜੇ ਤੁਸੀਂ ਇਸ ਸਮੱਸਿਆ ਬਾਰੇ ਬੋਲੋਗੇ ਤਾਂ ਤੁਸੀਂ ਸਾਡੇ ਪਰਿਵਾਰ ਨੂੰ ਸ਼ਰਮਦਾਰ ਕਰੋਗੇ"  
 Sai sự thật: "Nếu cô nói ra vấn đề này cô sẽ mang lại nỗi nhục nhà cho gia đình"  
 خلاف واقعیت: "اگر درباره این مشکل صحبت کنی باعث شرم و ننگ خانواده ما خواهی شد."

**"I can revoke your visa and you will be deported" → Please seek legal migration advice**  
 يرجى طلب المشورة القانونية بشأن الهجرة → يمكنني إلغاء تأشيرة الدخول لك وسيتيم ترحيلك  
 ਝੂਠ: "ਮੈਂ ਤੁਹਾਡਾ ਵੀਜ਼ਾ ਰੱਦ ਕਰਵਾ ਸਕਦਾ ਹਾਂ ਅਤੇ ਤੁਹਾਨੂੰ ਦੇਸ਼ ਠਿਕਾਣਾ ਬਿੱਤਾ ਜਾਵੇਗਾ" → ਇਹਨਾਂ ਕਾਰਨਾਂ ਕਾਰਨ ਤੁਹਾਨੂੰ ਸ਼ਰਮਦਾਰ ਕਰਵਾ ਦਿੱਤਾ ਜਾਵੇਗਾ  
 "Tôi có thể lấy lại thị thực của cô và cô sẽ bị trục xuất" → Xin vui lòng tìm lời khuyên đi trú hợp pháp  
 لطفاً در زمینه مهاجرت قانونی مشاوره بگیرید → "من می‌توانم ویزای تو را لغو کنم و اخراج (بیپور) خواهی شد."

**1800 Respect: 1800 737 732**  
**Crisis Care: 1800 199 008**  
**Domestic Violence Helpline: 1800 007 339**  
**Police (Emergency): 000**  
 Your local service: \_\_\_\_\_

**TIS**  
 TRANSLATING  
 AND  
 INTERPRETING  
 SERVICE  
 131 450  
 www.translatetis.gov.au  
 Support and  
 Services Directory

**Women's  
Legal Service WA**  
Justice for women

Supported by the Department of Communities

# Making Legal Systems Safer

WLSWA developed a proposed with partners to undertake to build the community legal sector's capability to appropriately screen for family violence risk and act on information given by a woman to ensure her safety. There are evidence-based screening tools and processes available for practitioner use, but not always fit-for-purpose for a community legal centre where there are unique practice and capacity implications, and not widely in use.

The need for assessment and planning that is perpetrator behaviour focused, and that enables a greater understanding of coercive control, is recognised and supported in the sector. In line with the WA FDV Common Risk Assessment and Risk Management Framework, developing a resource and approach that improves WLSWA practitioner's risk literacy and skills and supports lawyers to clearly articulate the impact of perpetrator behaviour on women and children's lives, can be scaled up across the sector and ensure consistency amongst services.

Mapping a woman's client pathway through the WA family violence service system, understanding where the risk posed by perpetrators is heightened, and identifying ways to improve the ways in which components of the system interact, to promote her and her children's safety, will extend this work.

As the only specialist gender-specific community legal centre in WA, and also a recipient of federal 'Vulnerable Women's' funding, WLSWA is well placed to oversee this work. This Project has only recently commenced and will conclude in 2024-2025.



# Fundraising

The Board and team fundraise on an ongoing basis, from executive corporate functions, to collecting smaller donations for emergency relief through our website, to being the recipient of funds others have raised for us, like Justice Idol and Fun Runs!

Different corporate partners have acknowledged the vital function our service provides and supported Women's Legal Service WA to continue to expand to help more women in need, like BHP.

WLSWA also gratefully accept donations to provide emergency relief to clients who have no money for expenses critical to cover essential items. Women and children in WA who are escaping family and domestic violence are also invariably experiencing financial hardship and in desperate need. Covering some basic costs of food, transport and phone credit, is often critical in enabling them and their children to escape violent relationships and ensure their safety and recovery.

As well as the availability of emergency relief alleviating some of the pressures commonly facing women escaping a violent relationship and home, this relief also assists in creating space for women to consider their options. Donations of \$2.00 or more are tax deductible.

[www.givenow.com.au/justiceforwomen](http://www.givenow.com.au/justiceforwomen)

